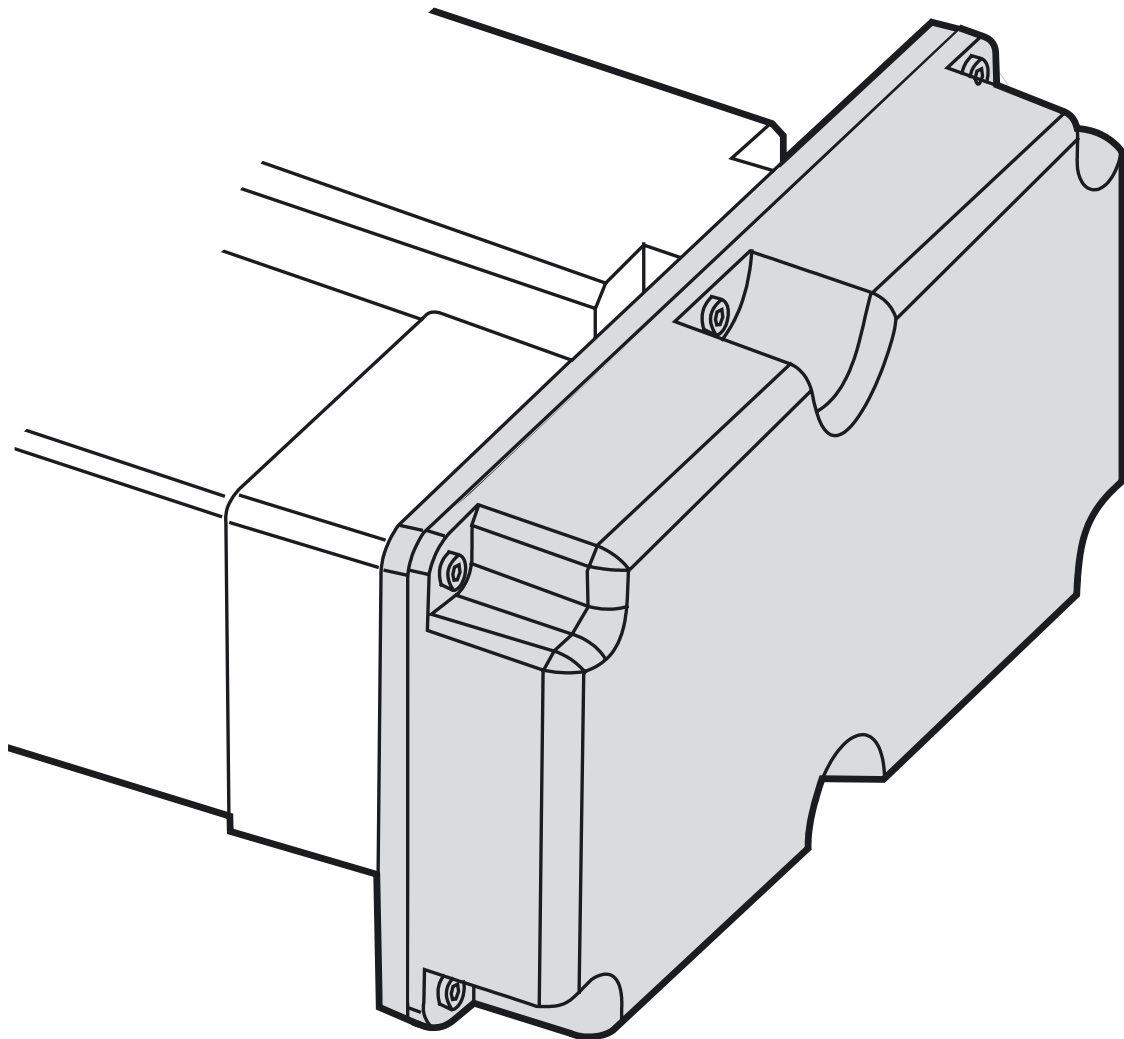


Beltgear type BGM09, BGM41 and BGM81



Installation Manual
Edition: 1
DW110500gb-0450

Table of Contents

1. Mounting instructions	3
1.1 Position of type designation plate and mounting of the belt gear plate.....	3
1.2 Mounting of the motor coupling	3
1.3 Mounting of the coupling to the unit.....	4
1.4 Mounting of the belt	4
1.5 Mounting of the cover	5
2. Tables	6
2.1 Tightening torque for screws	6
2.2 Dimension L.....	6
2.3 Tightening torque for motor shaft couplings	6
2.4 Tightening torque for unit shaft couplings	6
3. Technical data	7
3.1 Technical data	7

Version History

Edition Number	Edition Date	Reason for Revision
1	2004-12-08	Manual created

DANAHER MOTION is a registered trademark of Danaher Corporation. Danaher Motion makes every attempt to ensure accuracy and reliability of the specifications in this publication. Specifications are subject to change without notice. Danaher Motion provides this information "AS IS" and disclaims all warranties, express or implied, including, but not limited to, implied warranties of merchantability and fitness for a particular purpose. It is the responsibility of the product user to determine the suitability of this product for a specific application.

©2004 Danaher - Printed in Sweden. All rights reserved.

1. Mounting instructions

1.1 Position of type designation plate and mounting of the belt gear plate

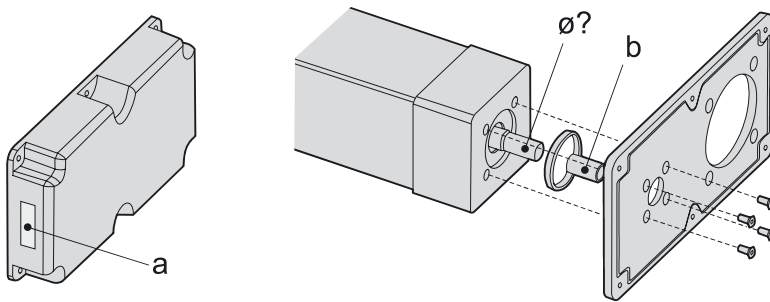


Figure 1: designation plate and belt plate

The designation of the belt gear can be found on the type designation plate (a). Measure the diameter of the unit shaft before mounting. Mount the belt gear plate and the spacer ring to the unit. Some belt gear models require a sleeve (b) to be mounted to the shaft of the unit. In such case a sleeve is included in the shipment. Tighten the screws according to table 1, page 6.

1.2 Mounting of the motor coupling

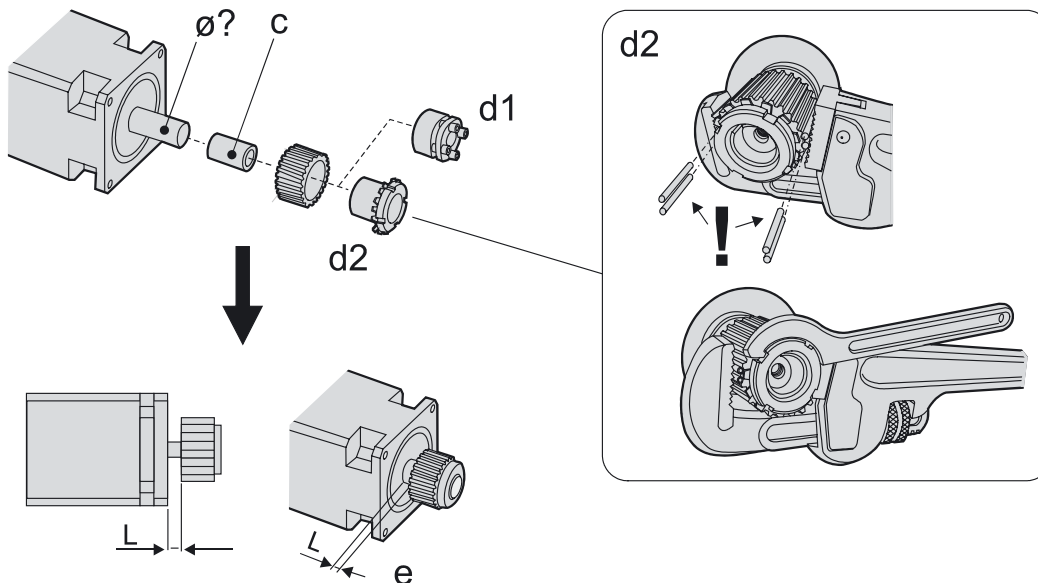


Figure 2: motor coupling mounting

Measure the diameter of the motor shaft. Some belt gear models require a sleeve (c) to be mounted to the motor shaft before mounting the motor coupling. In such case a sleeve is included in the shipment. Insert the coupling in the belt wheel and put the two on the motor shaft/sleeve. Tighten the coupling at the correct L dimension (see table 2, page 6) between the coupling and the motor flange. The supplied coupling can be one of two types (d1 or d2).

Coupling type d1:

This type of coupling use four tightening screws. The coupling tends to move out of the shaft when being tightened. To avoid this, tighten the screws in small steps and re-adjust the position of the coupling between each step until the correct tightening torque is set (see table 3, page 6).

Coupling type d2:

This type of coupling uses a tightening ring. Use four pins (supplied with the belt gear) when tightening the ring to avoid damaging the belt wheel. Tighten the ring until the correct tightening torque is set (see table 3, page 6).

1.3 Mounting of the coupling to the unit

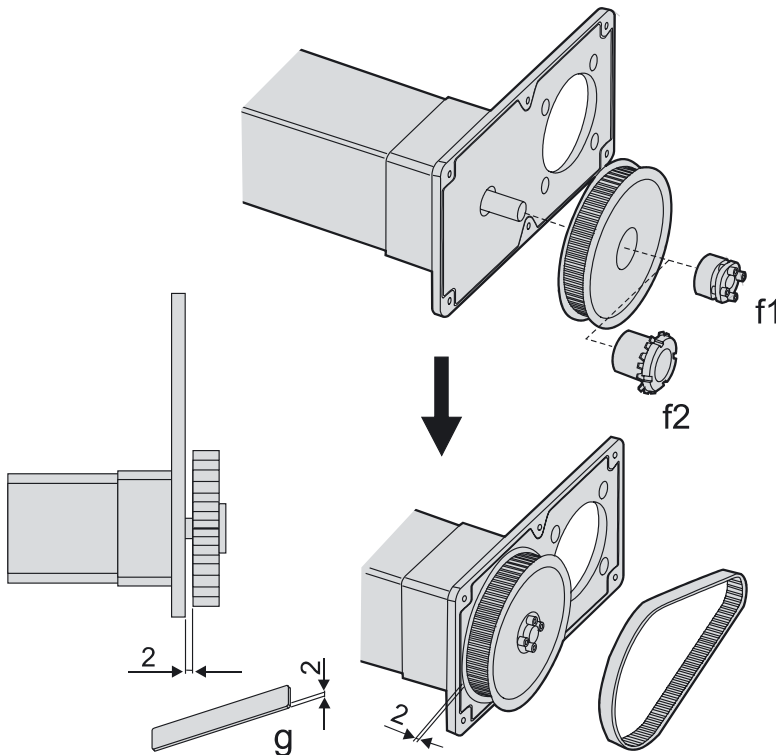


Figure 3: coupling to the unit

Insert the coupling in the belt wheel and put the two on the shaft/sleeve of the unit. The supplied coupling can be one of two types (f1 or f2). The correct distance between the belt wheel and the belt gear plate is 2 mm. Use the measuring stick (g) to ensure that the distance is 2 mm.

Coupling type f1:

This type of coupling use four tightening screws. The coupling tends to move out of the shaft when being tightened. To avoid this, tighten the screws in small steps and re-adjust the position of the coupling between each step until correct tightening torque is set (see table 4, page 6).

Coupling type f2:

This type of coupling uses a tightening ring. Tighten the ring until the correct tightening torque is set (see table 4, page 6).

1.4 Mounting of the belt

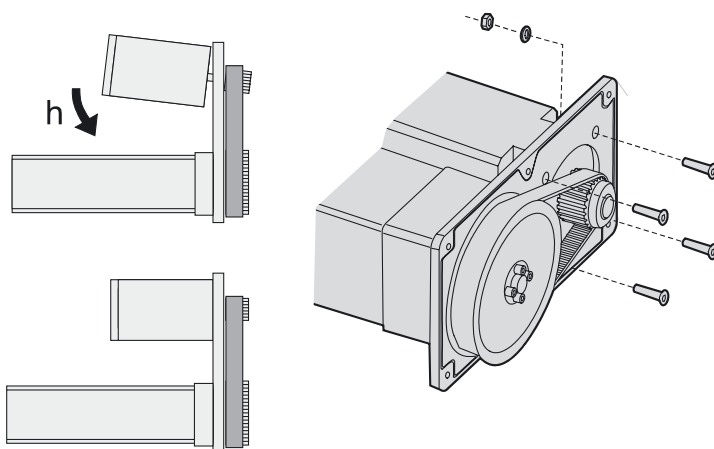


Figure 4: mounting of the belt

Put the belt around the belt wheel of the unit and then insert the motor (h). Mount the motor to the belt plate using four screws. Tighten screws according to table 1, page 6.

1.5 Mounting of the cover

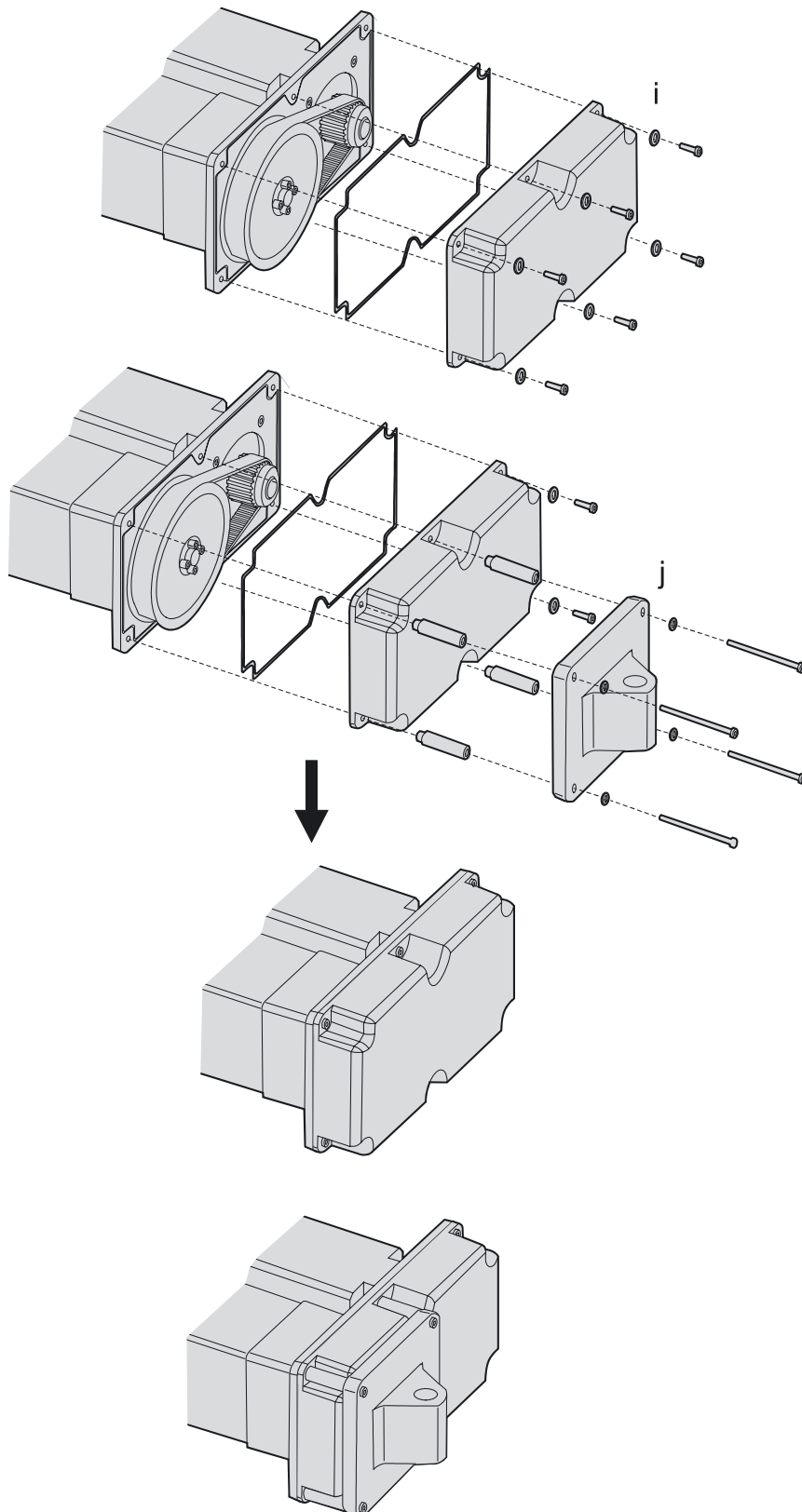


Figure 5: mounting of the cover

Mount the cover (i) and the sealing using the six screws. If the belt gear comes with a clevis (j), mount the clevis and the cover using the four distance sleeves, the four long and the two short screws. Tighten all screws according to table 1, page 6.

2. Tables

2.1 Tightening torque for screws

Screw size	Tightening torque [Nm]
M5	6,5
M6	9,4
M8	23
M10	52
M16	150

Table 1: tightening torque for screws

2.2 Dimension L

Type of gear	L [mm]
BGM09	9,5
BGM41	13,5
BGM81	16

Table 2: dimension L

2.3 Tightening torque for motor shaft couplings

Beltgear model	Coupling type	Motor shaft diameter [mm]	Sleeve required on the motor shaft	Tightening torque [Nm]
BGM09	d2	11	yes	100
BGM09	d2	14	yes	100
BGM09	d2	19	no	100
BGM41	d1	14	no	5
BGM41	d2	19	yes	140
BGM41	d2	24	no	140
BGM81	d2	24	no	140
BGM81	d2	28	no	140
BGM81	d2	32	no	140

Table 3: motor shaft couplings

2.4 Tightening torque for unit shaft couplings

Beltgear model	Coupling type	Unit shaft diameter [mm]	Sleeve required on the unit shaft	Tightening torque [Nm]
BGM09	f1	11	no	5
BGM09	f1	16	no	5
BGM41	f1	16	no	5
BGM41	f1	20	no	14
BGM41	f2	20	no	140
BGM81	f1	25	no	14
BGM81	f2	25	no	140

Table 4: unit shaft couplings

3. Technical data

3.1 Technical data

	Belt gear model		
	BGM09	BGM41	BGM81
Weight [kg]	1,9	4,6	12,1
Weight of clevis option [kg]	1,2	2,4	5,1
Max. input speed [rpm]	5000	5000	5000
Protection class	IP65	IP65	IP65

Table 5: technical data

Sales and Service

Danaher Motion products are available worldwide through an extensive authorised Distributor network. These distributors offer literature, technical assistance and a wide range of models off the shelf for fastest possible delivery.

Danaher Motion sales engineers are conveniently located to provide prompt attention to customers' needs. Call the nearest office listed for ordering.

France

Danaher Motion
C.P. 80018
12, Rue Antoine Becquerel - Z.I. Sud
Bâtiment Paul Tiger 2
F-72026 Le Mans Cedex 2, France
Tel. +33 (02) 43 50 03 30
Fax. +33 (02) 43 50 03 39
E-mail: sales.france@danahermotion.com

Germany

Danaher Linear GMBH
Postfach 2008
D-72610 Nürtingen, Germany
Tel. 0180 5 24 67 90
Fax. 0180 5 24 40 85
E-mail: info@danahermotion.net

Italy

Danaher Motion srl
Via Brughetti
200 30 Bovisio Masciago, Italy
Tel. +39 (0) 362 594 260
Fax. +39 (0) 362 594 263
E-mail: info@danahermotion.it

Spain

Danaher Motion
Tollo Linear
Badal, 29–31 7th, 1st
08014 Barcelona, Spain
Tel./Fax. +34 (0) 9329 80278
E-mail: helpdesk@tollo.com

Scandinavia

Danaher Motion
Tollo Linear AB
Box 9053
SE-291 09 Kristianstad, Sweden
Tel. +46 (0)44 24 67 00
Fax. +46 (0)44 24 40 85
E-mail: helpdesk@tollo.com

United Kingdom

Danaher Motion
Fishleigh Road
Roundswell Business Park
Barnstaple, Devon
EX31 3UD, UK
Tel. +44 (0) 1271 334500
Fax +44 (0) 1271 334502
E-mail: LMSEurope@danahermotion.com