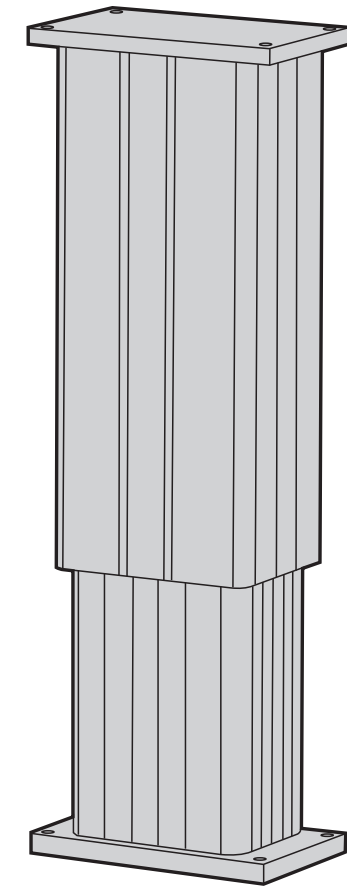


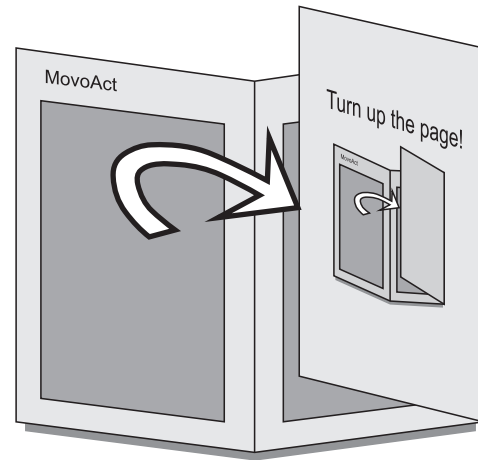
**Installation manual for MovoAct**



**Technical data**

	DMD	DMA
Motor	DC-motor with auto reset thermal switch do not use thermal switch as overload protection	AC-motor with auto reset thermal switch do not use thermal switch as overload protection
Supply voltage (for exact voltage, see label on MovoAct).	12, 24 or 36 Vdc ± 15 % The motor accepts battery and smoothed or unsmoothed full wave rectified voltage.	1 ~ 115 VAC (102 – 130 V) 60 Hz 1 ~ 230 VAC (212 – 240 V) 50/60 Hz 3 ~ 400 VAC (360 – 420 V) 50/60 Hz
Capacitor	–	115 VAC = 35 µF (p/no. D900-448-002) 230 VAC = 10 µF (p/no. D900-449-003) 400 VAC = not necessary
Max. current	See label on MovoAct	See label on MovoAct
Max. dynamic load	See label on MovoAct	See label on MovoAct
Duty cycle	25 % @ full load 25° C	25 % @ full load 25°C
Max. on time	One full cycle at full load	45 s
Ambient temperature	- 25 – + 65 °C	- 25 – + 65 °C
Lubrication	for life	for life
Slip clutch	yes (set to 1.2 – 1.5 × max. dyn. load)	yes (set to 1.2 – 1.5 × max. dyn. load)
Anti backdriving mechanism	yes	yes or electromagnetically released brake

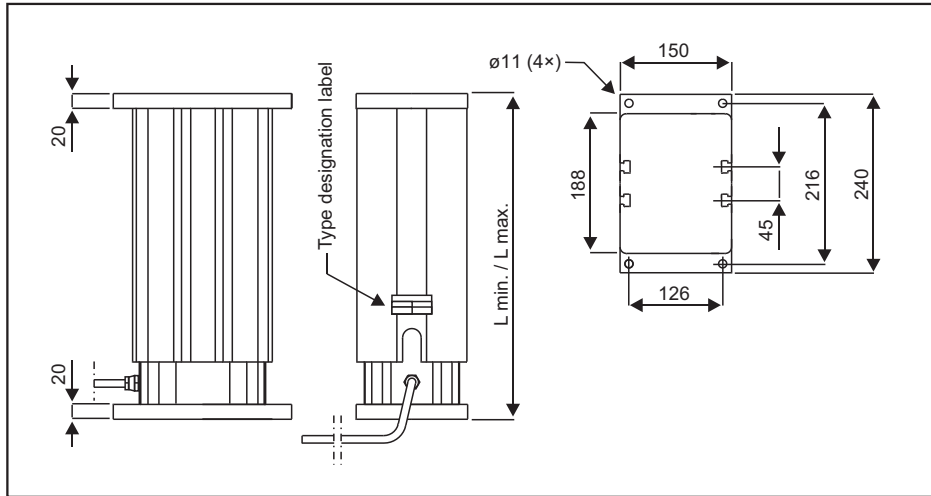
Turn up the page!



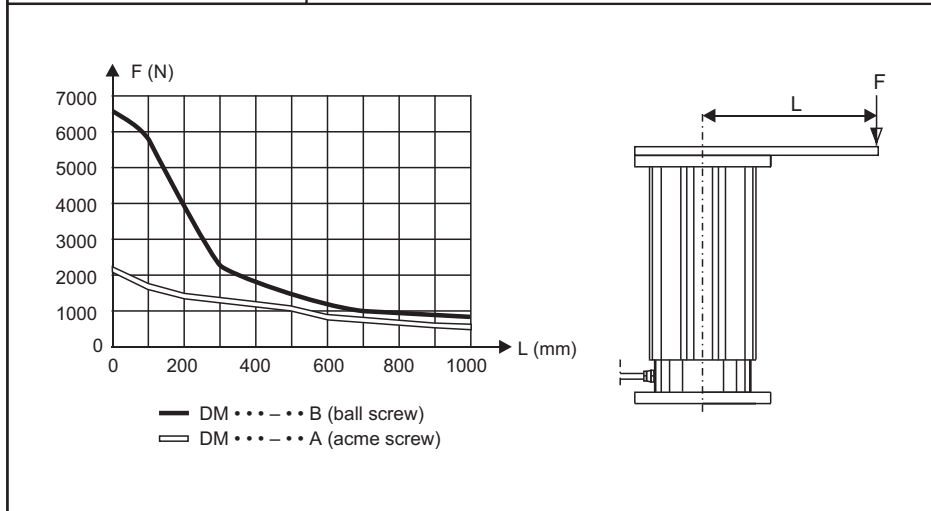
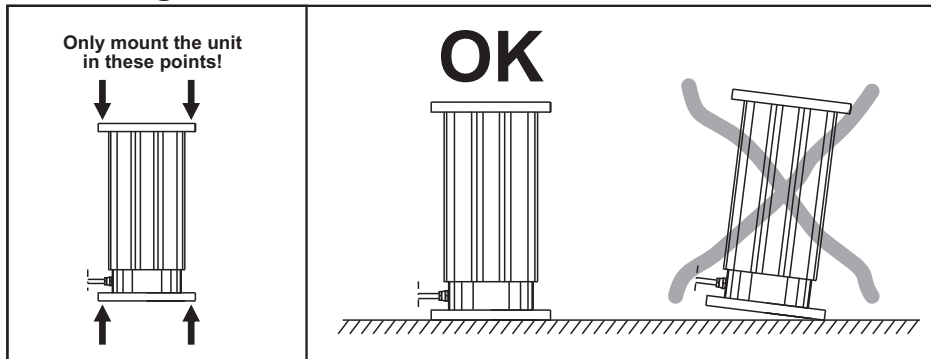
**Always install fuse and / or thermal breaker between  
motor and power supply to protect actuator, wiring and other items.**

**TOLLO LINEAR AB** PRINTED IN SWEDEN © 2000 DW110431gb-0350  
 Box 9053, SE-291 09 Kristianstad, Sweden Printed on recycled paper  
 Tel. +46 (0)44-246700 Fax. +46 (0)44-244085

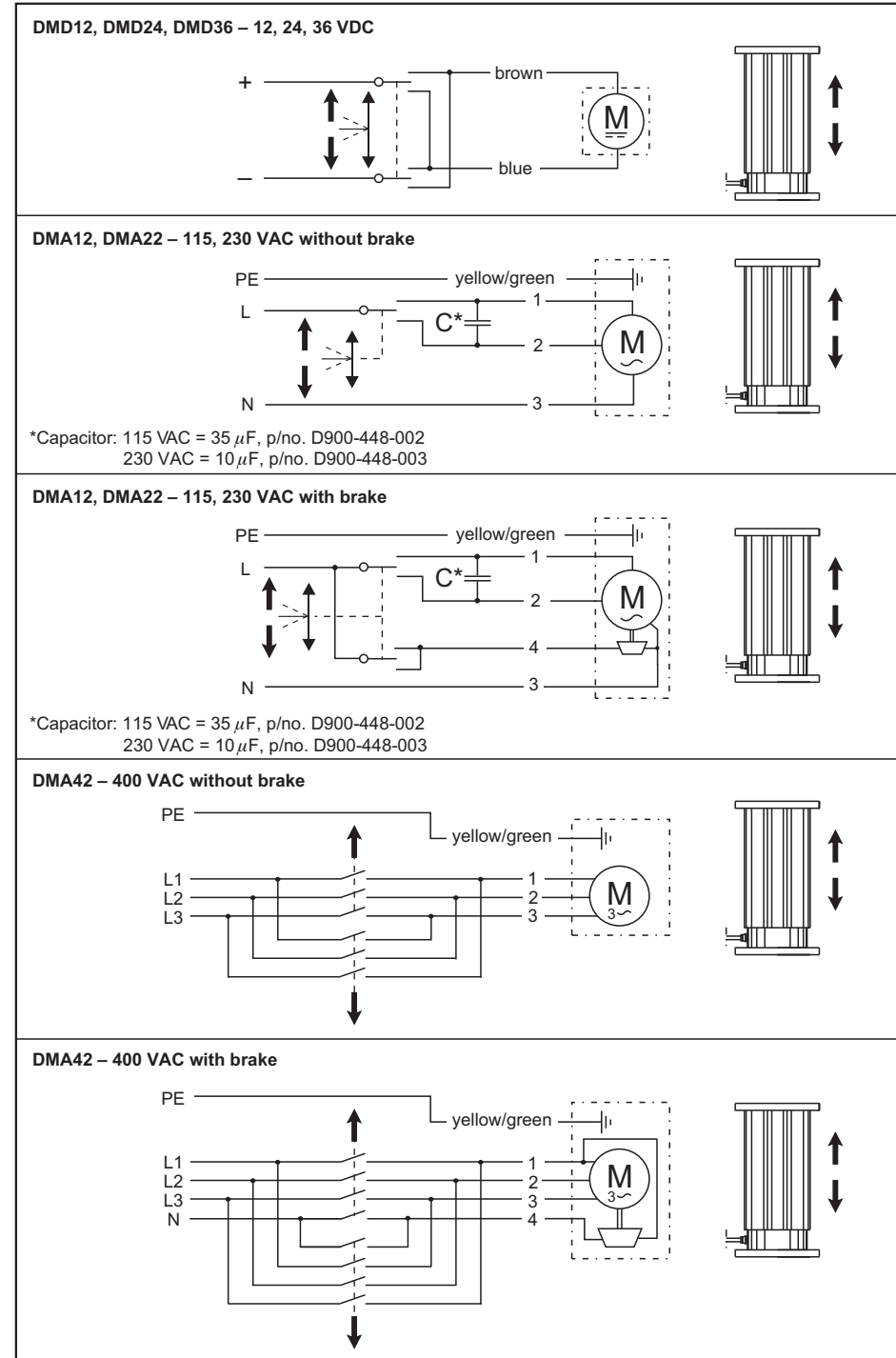
## Main dimensions



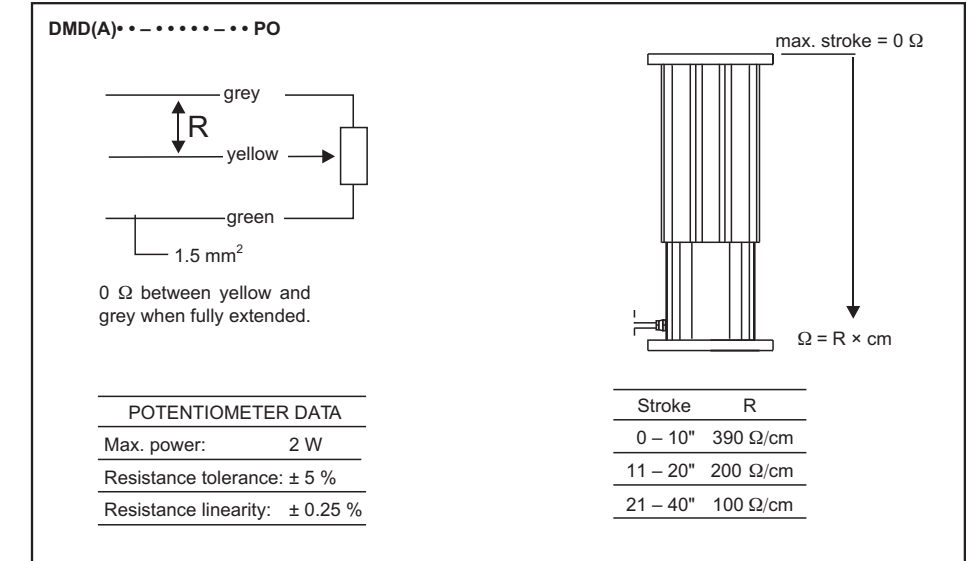
## Mounting instructions



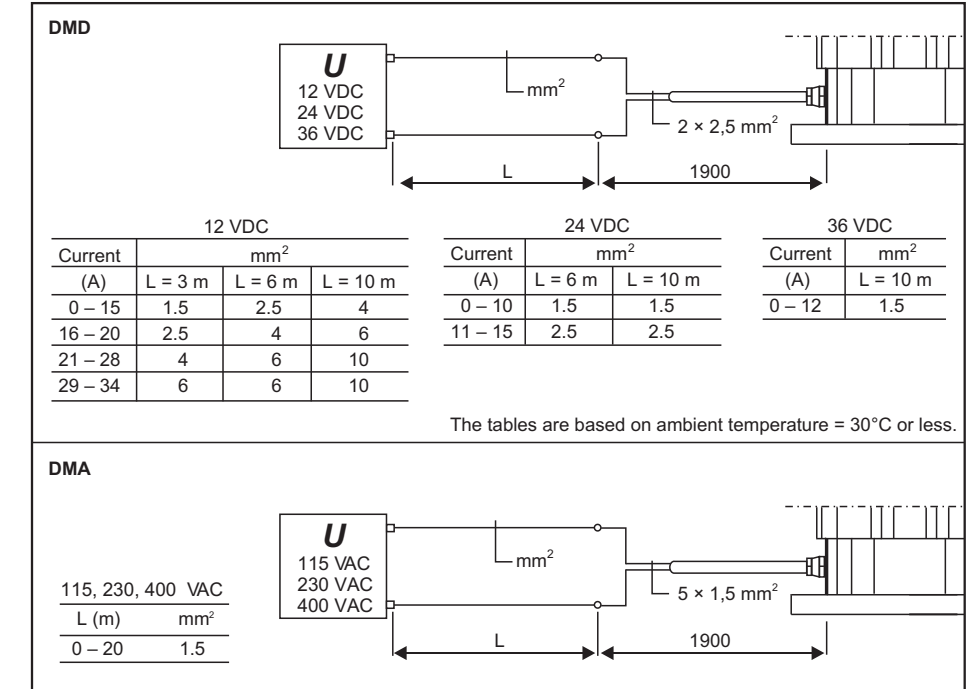
## Electrical connections



## Connection of potentiometer (option)



## Wire cross section



### CAUTION!

Always turn the power off before working on the actuator or the wiring.